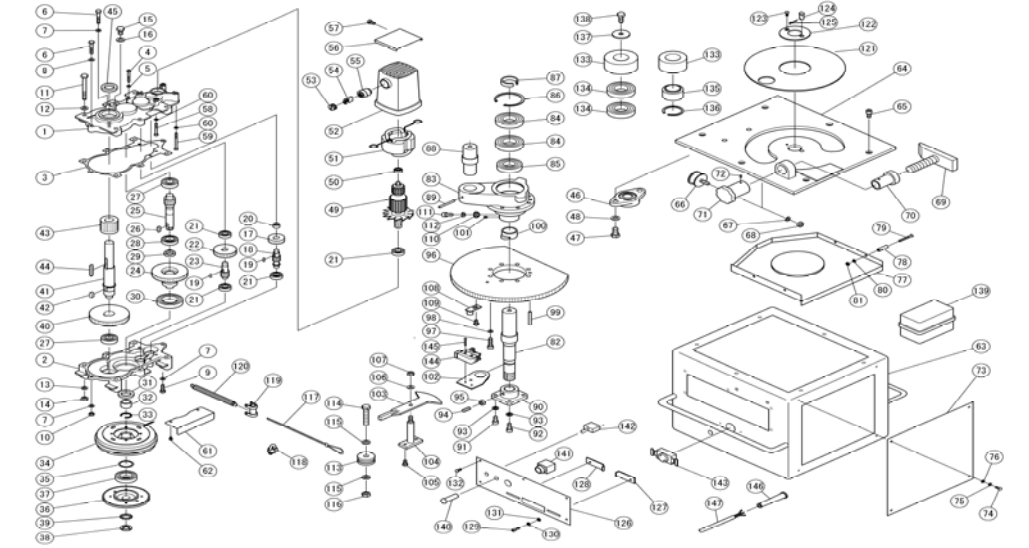


DBD-25H Rebar Bender



25.FEB.2009



| No. | Part No. | Part Name | Qty | No. | Part No. | Part Name | Qty | No. | Part No. | Part Name | Qty |
|-----|------------|-------------------------|-----|-----|------------|----------------------------|-----|-----|----------------|------------------------------|-----|
| 1 | 1BR5001 | GEAR CASE M | 1 | 57 | 7B08015 | BOLT M8X15 WITH WASHER | 1 | 113 | 1BR51101 | JIB | 1 |
| 2 | 1BR5002 | GEAR CASE C | 1 | 58 | 7C06050 | CAP BOLT M6X50 | 2 | 114 | 7B14060 | BOLT M14X60 | 1 |
| 3 | 1BR5203 | GEAR CASE PACKING | 1 | 59 | 7C06070 | CAP BOLT M6X70 | 2 | 115 | 7PW014 | PLATE WASHER M14 | 2 |
| 4 | 7CB06045 | CAP BOLT M6X45 | 2 | 60 | 7SW006 | SPRING WASHER M6 | 4 | 116 | 7NU014 | SELF LOCK NUT M14 | 1 |
| 5 | 7SW006 | SPRING WASHER M6 | 2 | 61 | 1BR5044 | CLUTCH COVER | 2 | 117 | 1BR4206600 | WIRE ROPE | 1 |
| 6 | 7B08050 | BOLT M8X50 | 3 | 62 | 7PB206008 | PAN HEAD BOLT M6X8 WWASHER | 4 | 118 | 1BR5117 | WIRE CLIP WITH NUT | 1 |
| 7 | 7SW008 | SPRING WASHER M8 | 4 | 63 | 1BR1025600 | FRAME | 1 | 119 | 1BR5118 | SPRING HANGER | 1 |
| 8 | 7PW008 | PLATE WASHER M8 | 1 | 64 | 1BR2062800 | BASE | 1 | 120 | 1BR5119 | RETURN SPRING | 4 |
| 9 | 7B08025 | BOLT M8X25 | 1 | 65 | 7CB10020 | CAP BOLT M10X20 | 6 | 121 | 1BR4206300 | CENTER COVER | 1 |
| 10 | 7N008 | NUT M8 | 1 | 66 | 1BR5133 | DAMPER | 1 | 122 | 1BR5134 | CENTER PLATE | 1 |
| 11 | 7B10100 | BOLT M10X100 | 4 | 67 | 7SW010 | SPRING WASHER M10 | 1 | 123 | 7SB06015 | FLAT HEAD BOLT M6X15 | 1 |
| 12 | 7PW010 | PLATE WASHER M10 | 4 | 68 | 7N010 | NUT M10 | 1 | 124 | 1BR50782 | ROLLER STOPPER | 1 |
| 13 | 7SW010 | SPRING WASHER M10 | 4 | 69 | 1BR5063 | ADJUSTABLE STOPPER | 1 | 125 | 7SSP10 | SNAP PIN SSP-10 | 1 |
| 14 | 7N010 | NUT M10 | 4 | 70 | 1BR5064 | ADJUSTABLE NUT | 1 | 126 | 1BR5050 | SWITCH PANEL | 1 |
| 15 | 7B12020 | BOLT M12X20 | 1 | 71 | 1BR5065 | ADJUSTABLE HANDLE | 1 | 127 | 1BR4206400 | ANGLE STOPPER (R) | 1 |
| 16 | 7WF12 | SEAL WASHER WF12 | 1 | 72 | 7SP05008 | SPRING PIN Φ5X8 | 2 | 128 | 1BR4206500 | ANGLE STOPPER (L) | 1 |
| 17 | 1BR5023 | HELICAL GEAR | 1 | 73 | 1BR3110400 | SIDE COVER | 2 | 129 | 7CB06018 | CAP BOLT M6X18 | 2 |
| 18 | 1BR5025 | PINION NO.1 | 1 | 74 | 7PB06010 | PAN HEAD BOLT M6X10 | 8 | 130 | 7GW006 | TEETHED WASHER M6 | 2 |
| 19 | 1BR5024 | HELICAL GEAR KEY | 2 | 75 | 7SW006 | SPRING WASHER M6 | 8 | 131 | 7PW006 | PLATE WASHER M6 | 2 |
| 20 | 1BR5009 | NEEDLE BEARING TA1212 | 1 | 76 | 7PW006 | PLATE WASHER M6 | 8 | 132 | 7PB306015 | PAN HEAD BOLT WWASHERS | 5 |
| 21 | 1BR5003 | BEARING 6202V | 4 | 77 | 1BR3110500 | DUST COVER | 1 | 133 | 1BR421250A | ROLLER NO.1 ϕ65MM | 1 |
| 22 | 1BR5026 | GEAR NO.1 | 1 | 78 | 1BR7121 | DUST COVER STAY | 4 | 134 | 1BR4212600 | ROLLER NO.2 ϕ79MM | 1 |
| 23 | 1BR5027 | PINION NO.2 | 1 | 79 | 7SB06050 | FLAT HEAD BOLT M6X50 | 4 | 135 | 1BR420700A | ROLLER NO.3 ϕ93MM | 1 |
| 24 | 1BR5028 | GEAR NO.2 | 1 | 80 | 7SW006 | SPRING WASHER M6 | 4 | 136 | 1BR4207201 | ROLLER NO.4 ϕ114MM | 1 |
| 25 | 1BR5029 | PINION NO.3 | 1 | 81 | 7N006 | NUT M6 | 4 | 137 | 1BR420710A | ROLLER NO.5 ϕ114MM | 1 |
| 26 | 1BR5030 | PINION KEY 7X7X20 | 1 | 82 | 1BR5068 | MAIN SHAFT | 1 | 138 | 1BR421270A | ROLLER NO.6 ϕ132MM | 1 |
| 27 | 1BR5004 | BALL BEARING 6204 | 2 | 83 | 1BR2062700 | SWIVEL ARM | 1 | 139 | 1BR4212800 | ROLLER NO.7 ϕ153MM | 1 |
| 28 | 1BR5006 | BALL BEARING 6005 | 1 | 84 | 1BR5070 | BALL BEARING 6208Z | 2 | 140 | 1BR420960A | ROLLER NO.8 ϕ166MM | 1 |
| 29 | 1BR5015 | OIL SEAL SC22-32-7 | 1 | 85 | 1BR5071 | BALL BEARING 6207Z | 1 | 141 | 1BR421290A | ROLLER NO.9 ϕ183MM | 1 |
| 30 | 1BR5008 | BALL BEARING 6009Z | 1 | 86 | 7SRH80 | SNAP RING C-80 | 1 | 142 | 1BT5070 | BALL BEARING 6208Z | 6 |
| 31 | 1BR5016 | OIL SEAL SC45-62-9 | 1 | 87 | 1BR5073 | SPACER | 1 | 143 | 7K5B4012 | DU BUSH | 1 |
| 32 | 1BR5010 | NEEDLE BEARING TA223020 | 1 | 88 | 1BR5074 | ROLLER SHAFT | 1 | 144 | 7K5B4025 | DU BUSH | 1 |
| 33 | 1BR5011 | CIRCLIP AR-30 | 1 | 89 | 7RC08060 | SPRING PIN Φ8X60 | 1 | 145 | 8P1085 | TOOL BOX | 1 |
| 34 | 7TMF1341 | CLUTCH ASSY | 1 | 90 | 1BR5079 | MAIN SHAFT CLAMP | 1 | 146 | 137 1BL5402000 | ROLLER CLAMP | 2 |
| 35 | 1BR5043 | SHIM | 1 | 91 | 7CB10020 | CAP BOLT M10X20 | 2 | 147 | 7B812025 | CLAMP BOLT M12X25 | 2 |
| 36 | 1BR5038D | CLUTCH ARMATURE FLANGE | 1 | 92 | 7CB10025 | CAP BOLT M10X25 | 2 | 148 | 1BR5200 | 1BR5129 CONTROL BOX ASSEMBLY | 1 |
| 37 | 1BR5007 | BEARING 6007ZZ | 1 | 93 | 7SW010 | SPRING WASHER M10 | 4 | 149 | 1BR5406 | MAGNET CONTACTOR | 1 |
| 38 | 1BR5031 | BEARING NUT | 1 | 94 | 7SS10025 | SET SCREW M10X25 | 1 | 150 | 1BR51296 | DIODE v05G | 1 |
| 39 | 1BR5032 | BEARING WASHER | 1 | 95 | 7N010 | NUT M10 | 1 | 151 | 1BR51291K | THYRISTER | 1 |
| 40 | 1BR5033 | GEAR NO.3 | 1 | 96 | 1BR3110200 | SWIVEL GEAR | 1 | 152 | 1BR5129F | FUSE HOLDER | 1 |
| 41 | 1BR5035 | SHAFT | 1 | 97 | 7CB10035 | CAP BOLT M10X35 | 8 | 153 | 1BR5129G | FUSE | 1 |
| 42 | 1BR5034 | GEAR NO.3 KEY | 1 | 98 | 7SW010 | SPRING WASHER M10 | 8 | 154 | 1BR5200B | TRANSFORMER 115V | 1 |
| 43 | 1BR4206200 | PINION NO.4 | 1 | 99 | 7RC08030 | SPRING PIN Φ8X30 | 1 | 155 | 1BR5126 | PILOT LAMP | 1 |
| 44 | 1BR5037 | PINION KEY | 1 | 100 | 1BR5087 | LIMIT SWITCH CAM | 1 | 156 | 141 7BN25F10 | OPERATION SWITCH | 1 |
| 45 | 1BR5017 | OIL SEAL SC30-45-8 | 1 | 101 | 7SS06006 | SET SCREW M6X6 | 1 | 157 | 1BR5231 | EMERGENCY BUTTON | 1 |
| 46 | 1BR5047 | FLANGE UNIT UCFL205 | 1 | 102 | 1BR51324 | ANGLE SET PINION | 1 | 158 | 142 3CD0151 | MAIN SWITCH | 1 |
| 47 | 7B14028 | BOLT M14X28 | 2 | 103 | 1BR3110600 | ANGLE LEVER | 1 | 159 | 1BR5128 | SOCKET FOR FOOT SWITCH | 1 |
| 48 | 7SW014 | SPRING WASHER M14 | 2 | 104 | 1BR50942 | ANGLE STAND | 1 | 160 | 1BR5124 | LIMIT SWITCH AZT141 | 2 |
| 49 | 1BR5012C | ARMATURE | 1 | 105 | 7B308015 | BOLT M8X15 WITH WASHERS | 2 | 161 | 145 7PB204030 | PAN HEAD BOLT WWASHER | 4 |
| 50 | 1BR6200ZZ | BALL BEARING 6200ZZ | 1 | 106 | 1BR5098 | DISK SPRING M10 | 2 | 162 | 146 1BR5012G | CORD ARMER | 1 |
| 51 | 1BR5012B | STATOR COIL | 1 | 107 | 1BR5099 | LOCK NUT SET | 1 | 163 | 147 1BR5012F | CORD SET | 1 |
| 52 | 1BR5012D | MOTOR HOUSING | 1 | 108 | 1BR5101 | SWITCH CAM | 1 | 164 | 1BR2062900 | STAND | 2 |
| 53 | 1BR5012H | BRUSH CAP | 2 | 109 | 7B308015 | BOLT M8X15 WITH WASHERS | 1 | 165 | 1BR4206700 | STAND STAY | 1 |
| 54 | 1BR5012A | CARBON BRUSH SET | 1 | 110 | 1BR5107 | WIRE CLAMP | 1 | 166 | 7B10025 | BOLT M10X25 | 10 |
| 55 | 1BR5012E | CARBON BRUSH HOLDER | 2 | 111 | 7CB10020 | CAP BOLT M10X20 | 1 | 167 | 7N010 | NUT M10 | 2 |
| 56 | 1BR5048 | MOTOR COVER | 1 | 112 | 7SW010 | SPRING WASHER M10 | 1 | 168 | 7SW010 | SPRING WASHER M10 | 10 |

Ex-factory, Japan